

ISO 14001

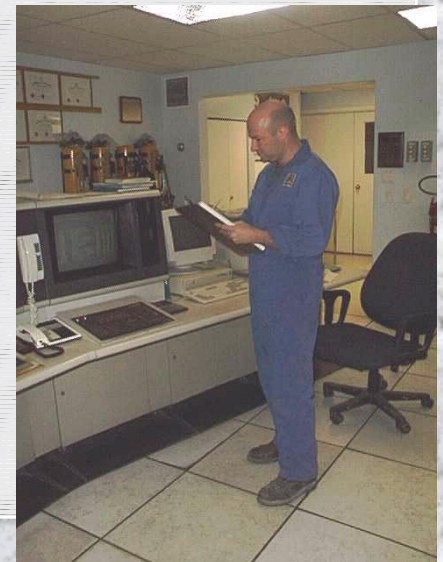
The Burnaby Incinerator

- Start up 1988
- Processes 250,000 tonnes of MSW per year
- Serves a population of roughly 420,000
- Regulated by the MOELP



Who Are We?

- We are MONTENAY INC.
- Responsible for operating and maintaining the Greater Vancouver Regional District's MSW-WTE facility
- Original operator for first 12 years of plant life
- Recently awarded 25 year contract to continue as facility operator
- Part of the VIVENDI Group

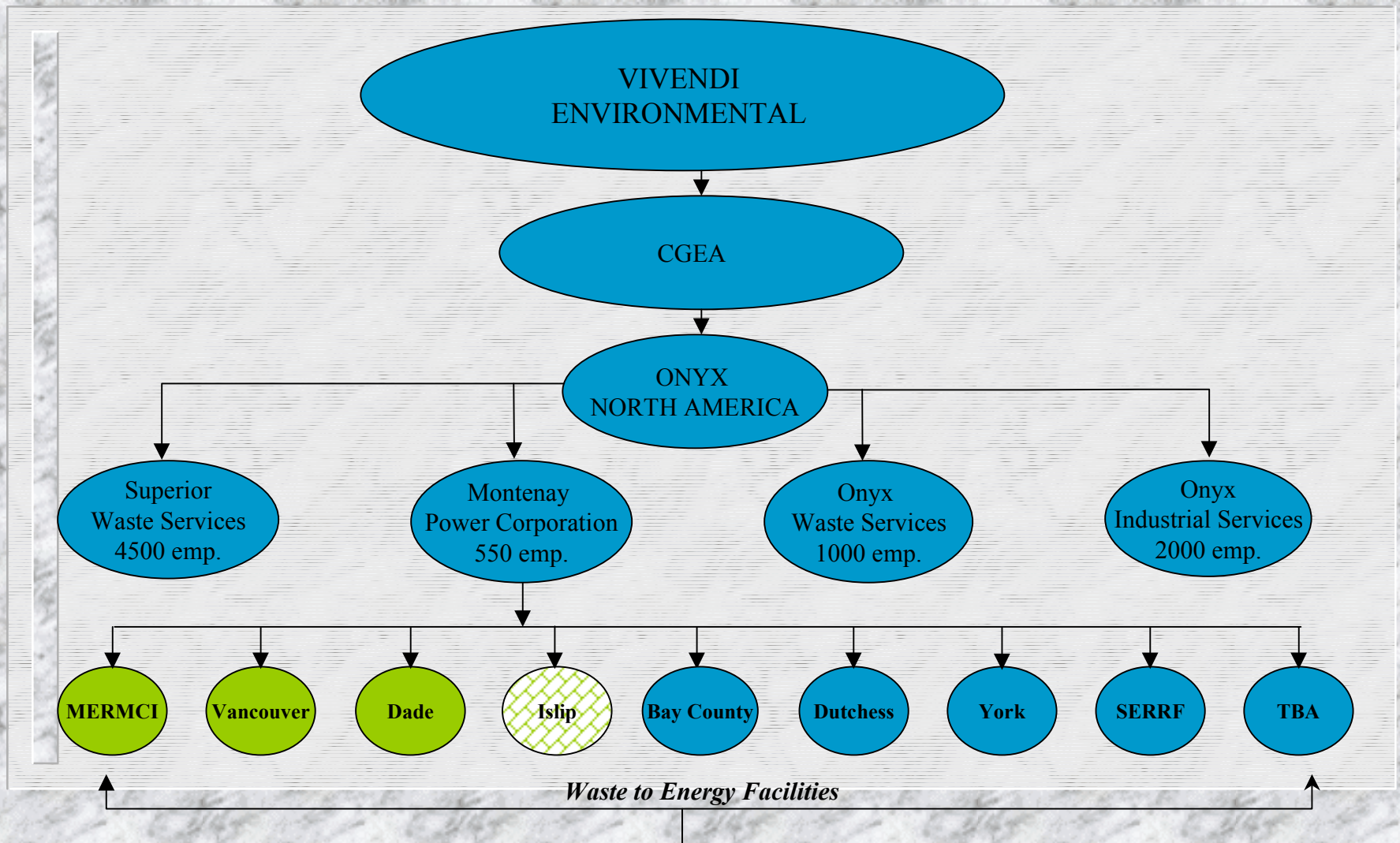


Vivendi/ONYX

- Vivendi, is based in France with operations in over 100 countries
- Consolidated net sales of 41.6 billion euros
- ONYX, part of the Vivendi Waste Management group is the world's 3rd largest waste company serving 50 million people and 70,000 industrial companies worldwide



Org Chart

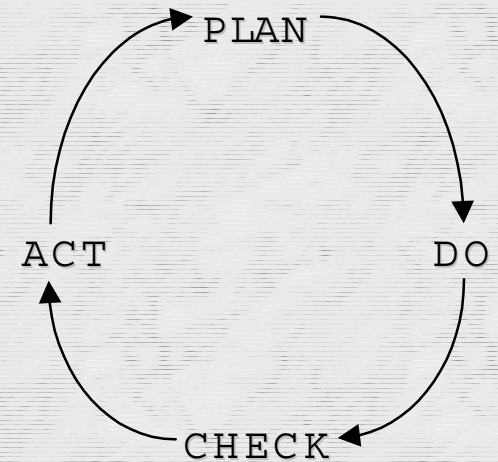


Montenay Inc.

- Part of ONYX North America
- Parent company Montenay Power Corp. based in New York, USA
- One of nine waste to energy facilities operated by the Montenay group in North America
- 1st WTE facility in Canada and 2nd in North America to achieve ISO 14001
- Both other 'ISO' WTE facilities in US are operated by Montenay

Why ISO?

- Vivendi CEO undertakes to enhance the environmental performance of all its business sectors by implementation of an Environmental Management System (EMS)
- In July 1998 MPC's Executive Committee approved the adoption of the ISO 14001 EMS at MONTENAY INC. Vancouver



Continuous Improvement

Why ISO? (cont'd)

- Demonstration of our strong commitment to the environment
- Compliance will improve as we think ahead instead of merely reacting to problems
- Plants using the ISO guideline can certify their operation as an ISO 14001 EMS. This will allow for international and domestic recognition of our ability to operate plants well and thereby enhance marketability of MPC's operating services

Implementation

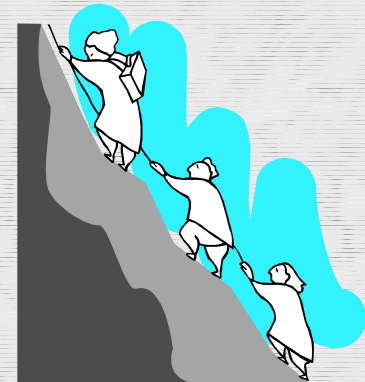
■ Identification of resources:

- Management support
- Corporate environmental support
- Facility personnel
- Local consultant support
- Budgetary commitment



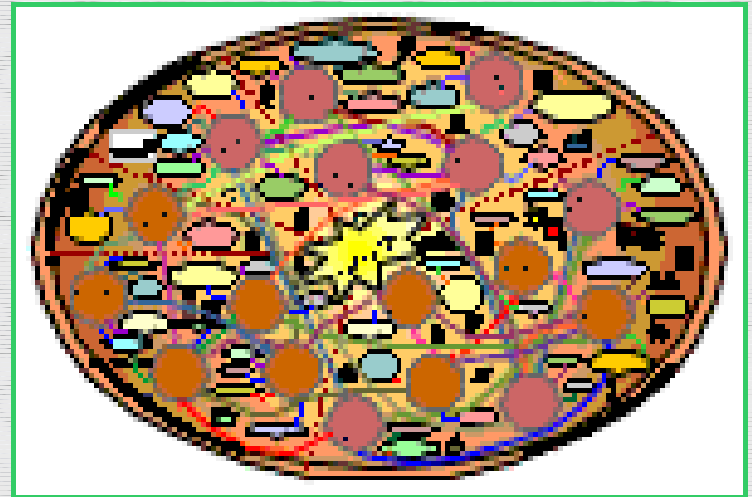
Development

- Program development is not a part time task
- Dedicated personnel must be assigned
- Commitment to milestones is important
- Resources must be available
- Employees must 'buy' in



Are You Ready?

- You've done all your homework, blown your budget, now it's time for registration ... who do you call?
- A reputable consultant, for a 'pre-registration' audit



The 'ISO Pizza'

Courtesy Management Alliances Inc

Pre-Registration Audit

- Is your house in order?
- Not a step to be skipped
- Valuable and cost effective tool to prepare you for the 'big day'
- Painful, but worthwhile



Registration

- If you've done a pre-registration audit, and have worked to address the issues, this process should go well
- The auditor will spend the first part of the audit reviewing your system to make a recommendation to proceed or not
- Not all registration audits continue at this point, so it is imperative you are well prepared

Maintenance

- Options for maintenance audits
- Our facility - once every 6 months
- Auditor looks at portions of the program to see if there is activity and the program is working
- Not a program that can be left on the shelf once registered, must be kept active
- Requires resources to maintain

Was it Worth It?

- Marketing is serious, we have a 25 year contract to attest to it
- Public perception is paramount, and in today's world, it is incumbent on industry to be progressive and to be seen as 'Stewards of the Environment'
- To this end, an EMS is a vital tool to accomplish these goals, and any good mechanic, uses all of the tools at his disposal to get the job done

Pitfalls

- Unscrupulous ‘consultants’ ... beware
- Failure to recognize financial commitment
- Inadequate assignment of personnel
- Lack of resources to keep the system ‘alive’
- Failure to involve the work force
- Putting it on the ‘shelf’ after registration

Is ISO Enough?

It's a good start and when properly approached, works well.

