



ANNUAL REPORT





Shell Canada Limited

Evaluating, Selecting, and Working with a Registrar

CEAA Conference

Tim Crowe

October 26, 2001

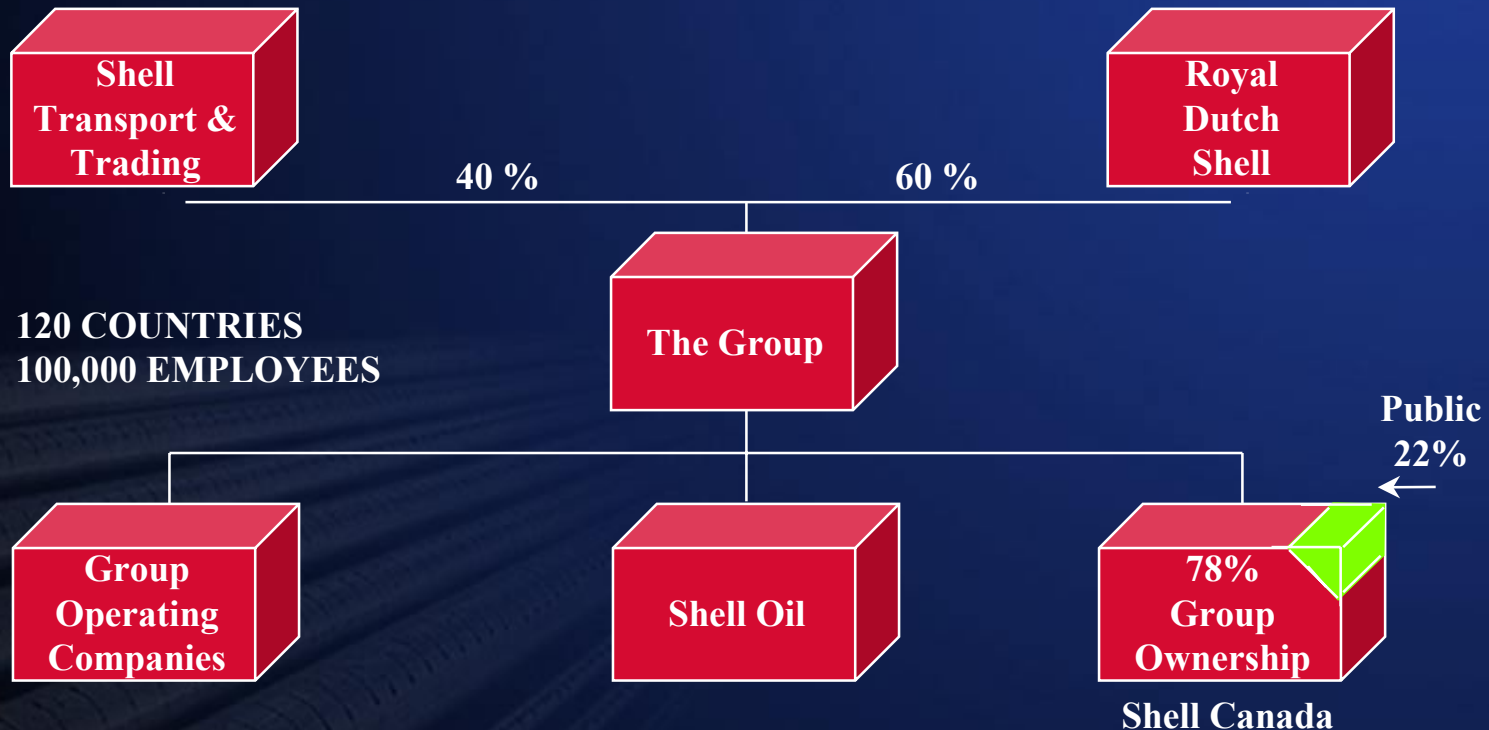
Agenda

- Overview of Shell Canada Limited
- Registration Process
- Criteria for Selection
- Working with the Registrar
- Beyond ISO 14001



We're part of Shell Group

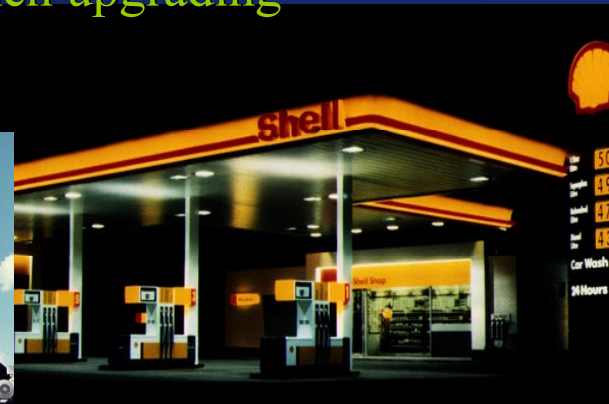
Though in a unique way...!



Shell Canada - Integrated Oil Company

Comprised of three principal functions

- ◆ Resources: Exploration, development and operation of oil and gas complexes
- ◆ Products: Refining, manufacturing, transportation and marketing of petroleum products
- ◆ Oil Sands : Development and operation of oil sands mine and bitumen upgrading facilities



Shell Canada in 2000

Revenues \$8.2 Billion
Earnings \$858 Million
Assets \$7.3 Billion
Return 20.3%
Employees 3,400



Shell Canada - Sustainable Development Commitment

- ◆ Pursue the goal of no harm to people
- ◆ Protecting the environment, pollution prevention
- ◆ Efficient use of material and energy
- ◆ Developing resources and products
- ◆ Leading Role in Promoting best practices
- ◆ Being a good neighbour

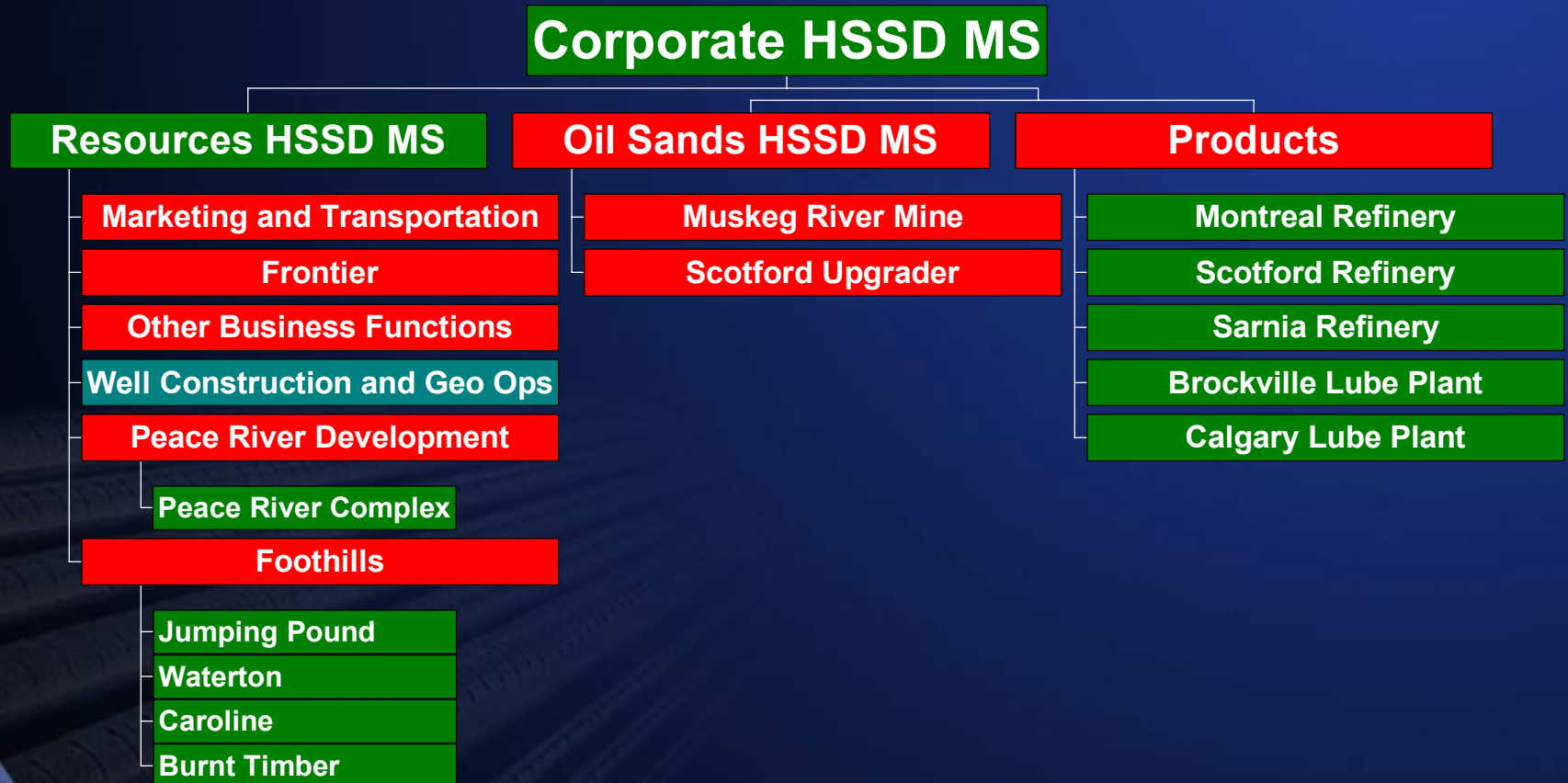


Shell's HSSD MS

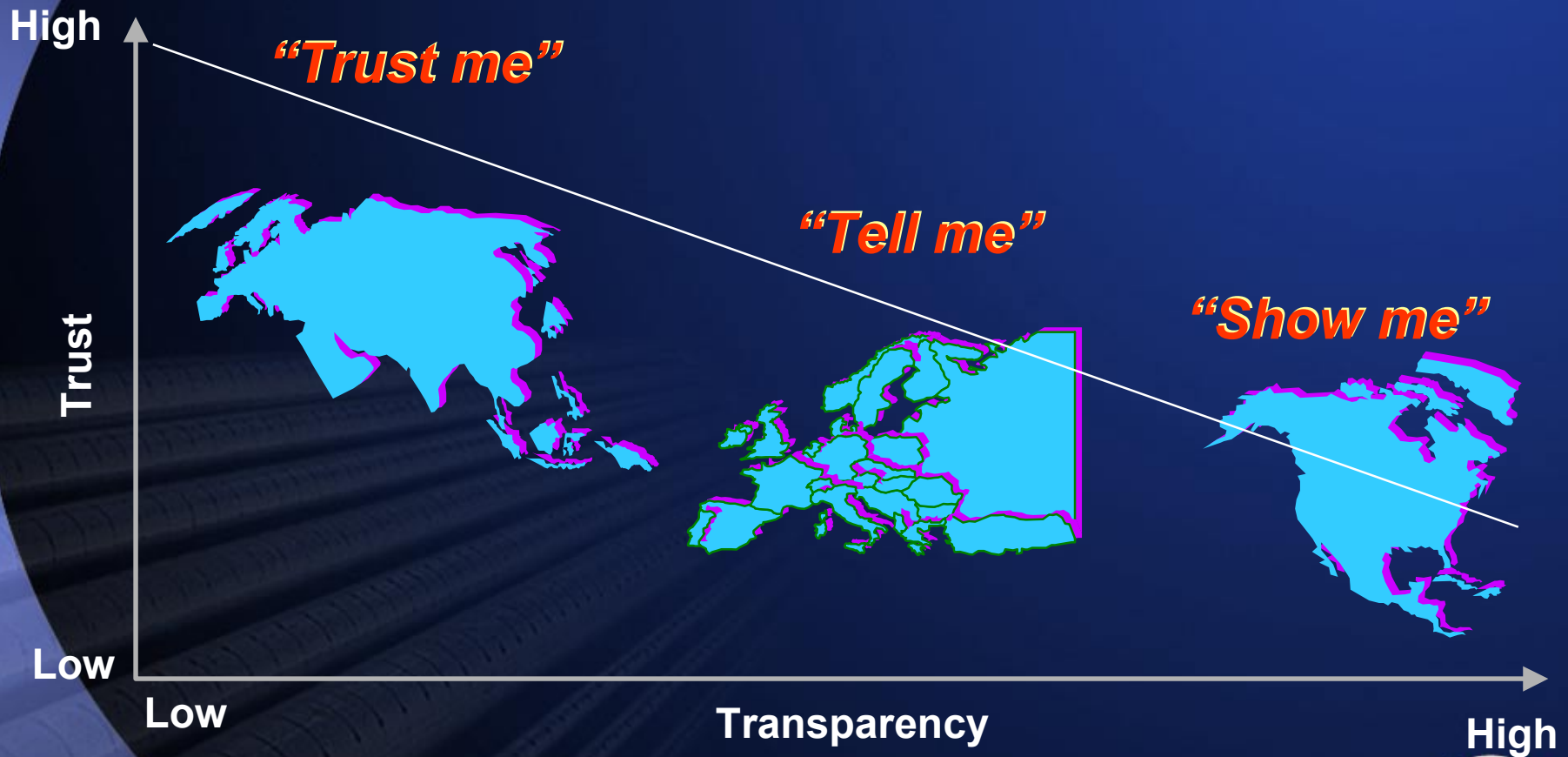
- **Provide a structured framework to ensure that HSSD risks in Shell's business are effectively managed**
- **We plan to register the environmental management component of our HSSD management system (EMS).**



What Shell Registered



The Emerging “Show Me “ World



As trust diminishes, the demand for transparency in the form of assurance mechanisms increases



Why Register?

- Alignment with Shell Group
- Transparency with Stakeholders
- Increased accountability to Public
- Regulatory requirement (JP)
- Establish a leadership position



Waterton Complex



Montreal East Refinery



Assessment Process

- **1999**
 - Assess and decide whether to register
 - Began assessing Registrars
- **2000**
 - Test case: Corporate HSSD MS and MER
 - Decision on Registrar (Products)
 - Resources assesses decision and follows
 - Registrations
- **2001**
 - Registrations continue



Registration Steps

- **Pre Audit by Environmental Consultant (Jacques Whitford)**
- **Document Review (KPMG)**
- **Readiness Review (KPMG)**
- **Registration Audit (KPMG)**



Criteria in Assessing/Selecting Registrar

- “Systems” vs “Compliance”
- Environment vs ISO 9000 Experience
- Sustainable Development - balancing business and the environment
- Credibility/Recognized
- Understanding how Shell Manages Environment (HSSD MS)



Criteria in Assessing Registrar

- Professional
- Flexibility/Adaptability
- Proximity to Operations
- Quality of Team/Continuity
- Other industry experience



Working with Registrar

- Build positive relationship
- Encouraging opportunities for improvement
- Help to lead change
- Reinforce the good things
- Sharing best practices



Working with Registrar

- **Flexibility**
- **Costs Focus**
- **HSSD MS - Understanding Shell's overall systems**
- **Exploring registration options**
- **Arms length**



Beyond ISO

- Registrar can contribute to reducing the Environmental Footprint
- Raising the Bar (sharing examples)
- Benchmarking (e.g. E&Y, Solomon)





ANNUAL REPORT

